



ADVANCED MADE SIMPLE FOR YOU



Advanced
Productivity

Advanced Workflow
and Mobility

Advanced
Image Quality



Advanced
Media Support



ADVANCED USABILITY AND CONVENIENCE

effortless operation through greater convenience



INTUITIVE CONTROL CONSOLE



imageRUNNER ADVANCE C3300 series comes with a full coloured 7" WVGA touch panel that is very easy to use. The vari-angle screen allows your staff greater accessibility from a variety of angles. You can also customise functions into shortcuts on the menu bar.



CONFIGURABLE QUICK MENU

The configurable Quick Menu lets you run complex, multi-step tasks with the touch of a single button. Frequently used destinations and function settings can also be registered and re-used easily.



READY FOR PRODUCTIVITY

The imageRUNNER ADVANCE C3300 series switches from energy-saving Sleep Mode to full powered productivity in an instant. Simply place your document on the automatic document feeder or multipurpose tray and the device is ready to go.



EASY RELOADING AND REPLACEMENT

Enjoy greater uptime with consumables replacement walkthrough videos which are shown upon low consumables notification (e.g. toner replacement). Users can easily understand the steps needed, reducing time and effort required.

In addition, the redesigned paper cassette tray takes just one step for withdrawal. It even features a soft closing mechanism for greater durability and user experience.



CONVENIENT PRINT AND SECURITY

The imageRUNNER ADVANCE C3300 series comes with standard USB ports that allow you to print directly from or scan and store to your USB Memory media. You may also choose to install the optional ID Card Reader for easy and secure authentication.

** Optional Direct Print Kit or Adobe® PostScript® 3™ is required to print PDF. USB Device Port required for installation of optional ID Card Reader.*

REMOTE OPERATION SOFTWARE

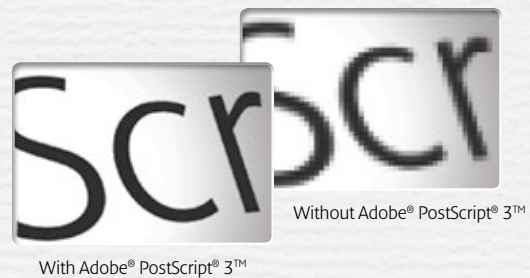
Take full control of your device functions remotely from the convenience of your desk without any optional accessory. Available on Windows based PCs, you can use the on-screen operation panel emulation to operate the imageRUNNER ADVANCE device. This is particularly useful for network administrators and users with accessibility needs.

ADVANCED PRINT QUALITY

print performance that shows

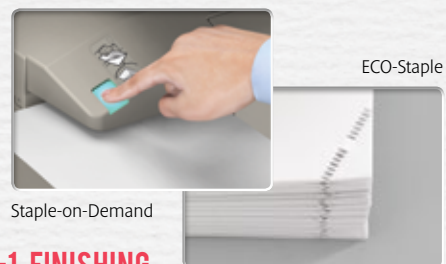
VIVID AND VIBRANT COLOUR PRINTS **V² COLOUR**

The imageRUNNER ADVANCE C3300 series employs newly developed combination of density fine adjustment, automatic gradient control and colour range control to give you vivid, vibrant images.



RELIABLE PRINT PERFORMANCE

Canon's UFR II print technology employs load balancing to enhance the speed and performance of print jobs. PCL 5c/6 and Adobe® PostScript® 3™ are also available as options. Genuine Adobe® PostScript® 3™ enables crisp output quality without worrying about font compatibility. With this capability, you will also have smoother print workflows, direct PDF print and full support for Adobe fonts.



3-IN-1 FINISHING

The optional Inner Finisher adds a 50-sheet stapling capability without adding to the device's compact footprint. Enjoy added convenience with the Staple-on-Demand feature where users can re-staple documents on the spot after scan or copy tasks. Users can bind print or copy documents with the ECO-Staple, which is environmentally friendly and hassle-free.

INTELLIGENT MULTIPURPOSE TRAY

Place documents of any size on the multipurpose tray and it will automatically detect the relevant paper sizing, saving time, paper resource and effort.



ADVANCED PRODUCTIVITY

work efficiency that is simply enterprising

CONCURRENT TASKS CAPABILITY

The imageRUNNER ADVANCE C3300 series is not only multifunctional – it is also a multi-tasker. Users can perform various tasks at the same time, such as scanning when another user is printing, even before the device finishes sending e-documents.

SUPER G3 FAX FUNCTIONALITY

Upgrade with the Super G3 fax option to add high-speed, reliable fax functions on your imageRUNNER ADVANCE C3300 series. Users can preview fax content before printing or sending, saving precious time and paper. You can also enable automatic forwarding based on specific conditions to transmit to any destination.

For organisations with existing fax-enabled imageRUNNER ADVANCE systems within the network, you can leverage the fax function with the economical Remote Fax Kit to realise greater cost savings.

ADVANCED WORKFLOW

optimizing the way you work

ADVANCE INNOVATED SERVICE OPERATION

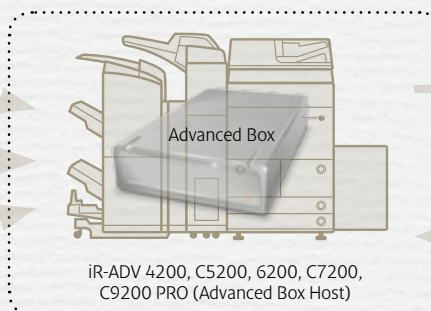
As part of our service evolution, Canon is moving to the next phase of advanced service standards. This initiative is known as Advance Innovated Service Operation (AISO). From the design of the device to process optimisation and day-to-day operational concerns, we have improved every aspect to help you save cost, time, and resources.

One of these key drivers is eMaintenance - a simple yet powerful service that eases your administrative burdens dramatically. You can automate your fleet maintenance tasks, improve consumables management, and gain better control of all your networked Canon printing devices.

With the remote operation software, users' issues can be resolved in a timely, accurate and effective manner — even before we step into your office.

MAILBOX SIMPLE

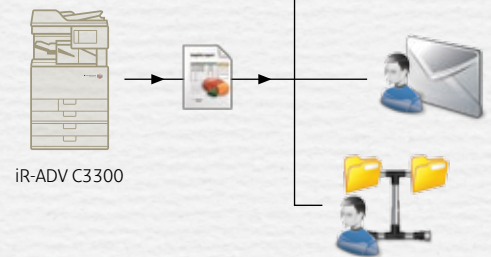
The imageRUNNER ADVANCE C3300 series comes with an in-built Mailbox Simple that allows storage on the device itself. Users can scan and store files directly, or retrieve stored data for printing.



Send or retrieve files through your imageRUNNER ADVANCE C3300 series when connected to the same network with higher-end imageRUNNER ADVANCE models with the Advanced Box feature.

UNIVERSAL SEND

Simplify your document workflow with Canon's proprietary Universal Send technology, which enables you to scan and disseminate documents to a multitude of destinations concurrently in a single operation. This reduces repetitive work when sending the same document to different destinations.



ADVANCED BOX COLLABORATION

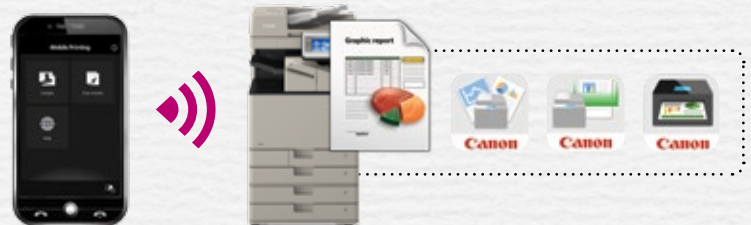
When acting as a client device, the imageRUNNER ADVANCE C3300 series can save, preview, rename, or print files stored in the Advanced Box of higher-end imageRUNNER ADVANCE devices* within the same network. Alternatively, you can access files on a shared folder through a PC. For confidential documents, encrypted personal folders can be created.

* Requires connection to imageRUNNER ADVANCE with in-built Advanced Box function.

MOBILE PRINTING AND SCANNING

For users on the go, the versatile imageRUNNER ADVANCE C3300 series provides simple mobile print functionality from their device with the Canon Mobile Printing. It supports a wide variety of formats including image, photo, PDF files and web pages. Mobile users can also use the Canon Mobile Scanning for Business to scan and save data on their mobile devices, upload it to cloud storage services and send it as e-mail attachments to themselves.

* Canon Mobile Printing, Canon Mobile Scanning applications and Canon Print Service (Android-only plug-in) can be downloaded on Apple or Android devices.



ADVANCED SOLUTIONS

solutions for today's business challenges

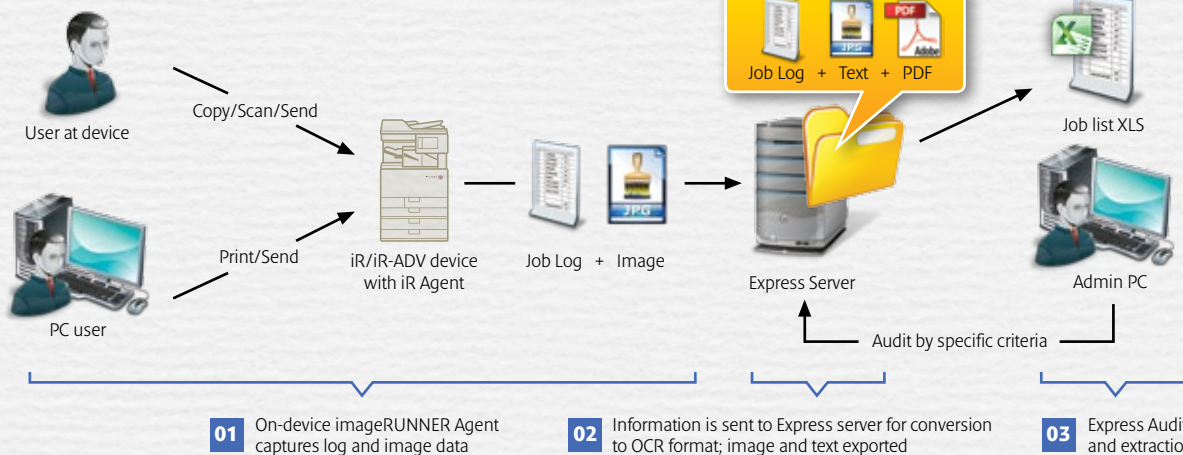


UNIVERSAL LOGIN MANAGER

Easy to implement and use, this is a server-less solution that provides users with a personalised login experience. IT administrators will find that the Universal Login Manager is a useful tracking tool to access print and copy usage. It can also be upgraded to uniFLOW for more advanced features.

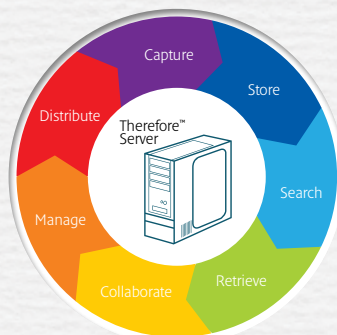
iW SECURE AUDIT MANAGER EXPRESS

Oversee and safeguard the distribution of your organisation's documents. Protect against potential espionage by logging text and image data with this real-time security solution.



ENTERPRISE DOCUMENT MANAGEMENT SOLUTIONS

Complement your imageRUNNER ADVANCE C3300 series with various enterprise document and output solutions to realise the full potential of your fleet. Here are some notable highlights.



THEREFORE

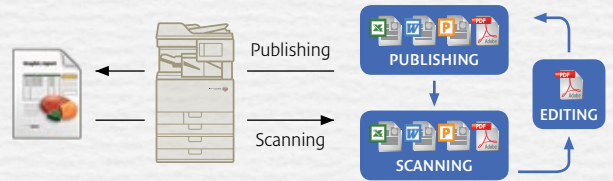
Therefore™ is a premium information management system for enterprises created to manage all types of information. It allows you to capture, organise and secure access to important information for all your users. End users and administrator alike will appreciate the intuitive user interface, flexible workflow annotations, electronic signatures, easy integration and a high powered search engine.

eCOPY SHARESCAN

Digitise your paper-based data into electronic workflows with this comprehensive suite. Scan, extract, classify, index and convert from the multifunctional device and send directly to selected electronic destinations.

MEAP PLATFORM

Manage your workflow easily and effectively with Canon's Multifunctional Embedded Application Platform (MEAP) designed to offer greater flexibility and adaptability to meet your individual needs. Pair your imageRUNNER ADVANCE C3300 series with a selection of software solutions compatible with MEAP to bring your business to the next level.



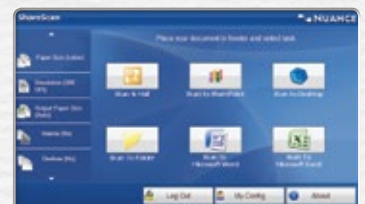
iW DESKTOP

iW Desktop is a powerful PC-based solution designed with efficiency in mind. The software's live view shows you exactly what will be published, while the intuitive controls allow you to perform essential tasks with complete ease. It fully supports your organisation's document cycle from gathering information to publishing and storage, with each step flowing into the next effortlessly.

- Efficiently notifies fax reception and sends fax documents.
- Enables integrated management by editing and processing various electronic and paper documents.
- Reduces costs of document outputs.
- Implements seamless digitisation of documents with familiar operations.
- Achieves an approval flow with electronic documents easily.
- Enables sharing and central management of office documents.

uniFLOW

Save time and money for your organisation's with this smart output management solution that provides effective control over your entire fleet. With its modular design, uniFLOW can be customised to fit the unique needs of your organisation. uniFLOW offers an array of benefits from full accounting and reporting, follow me printing, job routing to cost management and even document capture.



ADVANCED SECURITY AND MANAGEMENT

device and software security solutions that protect your business

DEVICE SECURITY

Designed to enhance the security level of your imageRUNNER ADVANCE C3300 series, device authentication system are in place to manage users access through User Authentication or the optional Universal Login Manager. You can perform more detailed user management such as limiting the functions available for each user. In addition, users can register both characters or numeric IDs and passwords, allowing greater personalisation.

If you are looking for a holistic security and cost-saving measure, the optional Access Management System is your answer. This system allows you to configure each user's access rights on a per feature basis to prevent unauthorised distribution and information leakage.

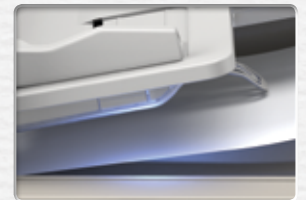
DATA SECURITY

The imageRUNNER ADVANCE C3300 series offers HDD Data Erase as a standard feature, enabling a safer automatic removal of sensitive data upon job completion. To enhance the level of security of your stored data in the hard disk, invest in the additional HDD Data Encryption Kit that automatically encrypts all stored data and saves the encryption keys separately from the data.

DOCUMENT SECURITY

The security of your confidential documents should never be overlooked. For added protection, Encrypted Print Software is available as an option. This encrypts the print data not only during transmission, but also while it is residing within the print queue. Users are required to authenticate themselves in order to decrypt and print the file at the device.

The feeder tray is partially transparent, allowing users to see uncollected documents. As an added precaution, the Reminder LED illuminates during operation and blinks on job completion. This provides a visual reminder to collect documents and help prevent information leak.



MANAGED DOCUMENT SERVICES

Canon offers a unified consultancy service for holistic document solution management. Our experienced consultants employ proven methodology to help you reduce cost, improve serviceability, and optimise business processes.

ADVANCED RESPONSIBILITY

Doing more for our environment



ENVIRONMENTALLY RESPONSIBLE

Every imageRUNNER ADVANCE is partially built from recycled plastics and bioplastics, and subject to strict environmental standards.

IT'S TIME TO SAVE

Setting an automatic power down schedule for devices based on actual usage helps save energy especially after office hours and non-work days.

LOWER TOTAL ELECTRICITY CONSUMPTION

imageRUNNER ADVANCE devices consume less electricity. Doing this not only saves on the energy bills, it reduces CO² emissions that damage our environment.

SETTING THE RIGHT TONE

Our new Insulated & Air Pressure (IAP) toner bottle uses less material compared to previous designs, therefore reducing wastage.

