

Specifications

General Specifications

Maximum Scan / Print size	A3	
Print Speed	28ppm (A4 LEF)	
Scanning Method	Color CCD	
Printing Method	Electrophotographic method / LED	
Resolution	Scanner 600 dpi / Printer 600 dpi	
Document Feeder	MFX-2835: Option / MFX-2835R: RADF	
Duplex Print	Standard	
Paper Capacity	MFX-2835: 300 sheets (including 50-sheet Bypass tray) MFX-2835R: 800 sheets (including 50-sheet Bypass tray)	
Maximum Paper Capacity	1,800 sheets (250 + 500x3 + 50)	
Memory	128MB (+256MB on OfficeBridge option)	
Memory Backup Maximum	72 hours (after 24 hours full-charge)	
Multi-task Operation	Quad Access	
Ethernet	Option (10BASE-T / 100BASE-TX)	
Local Connection	USB 2.0	
Power	220-240 VAC, 50Hz	
Power Consumption	Ready Mode	34Wh
	Sleep Mode	1.0W (Minimum power mode: 0.5W*)
	Maximum	1,020W (Full option)
Dimensions(WxDxH)	Standard	MFX-2835: 583mm x 629mm x 426mm (1cassette) MFX-2835R: 585mm x 630mm x 633mm (2 cassettes)
	Maximum	585mm x 630mm x 881mm (4cassette)
Weight	Standard	MFX-2835: Approx. 31.0kg (excluding consumables) MFX-2835R: Approx. 41.9kg (excluding consumables)
	Maximum	Approx. 53.1kg (4cassette, excluding consumables)
Toner Yield	11,000 sheets (A4 @ 5%)	
Drum Life	100,000 sheets (A4, 1-page cycle)	

Options

ADF	50 sheets (A4) : Simplex document feeder(MFX-2835 only)
RADF	100 sheets (A4) : Duplex document feeder(MFX-2835 only)
Paper Tray (S)	Optional Cassette 250 sheets(MFX-2835 only)
Paper Tray (L)	Optional Cassette 500 sheets
PCL Printer Interface	PCL 5e & PCL XL emulation
Network Interface	10BASE-T / 100BASE-TX interface card
OfficeBridge kit	Network interface, Advance features & 256MB
OfficeBridge Memory Expansion	1GB memory for OfficeBridge Kit

Features

Copier Features

Copier Speed	28 cpm (A4 LEF)
First-copy-out Time(FCOT)	4.8 seconds (Using A4 LEF document/from 1st cassette/bookscan)
Warm Up Time	5.0 seconds (at 20°C room temperature)
Grayscale	256 levels
Copy Quantity	1 - 999
Reduction / Enlargement	25 - 200 % (1% step)
Other features	Combine(2/4/8 in1) copy, Repeat copy, Card copy, 90°Rotation copy, Electronic Sorting, Cross Sorting, Series copy, Duplex copy, Booklet copy

Printer Features

Emulation	GDI(Standard) / PCL 5e, PCL XL (Optional)
Interface	USB2.0 (Standard) / 10BASE-T, 100BASE-TX (Optional)
Operating Systems	Windows 2000, XP, Vista, 7, 8, Server 2003 / 2008 / 2012
Print Quantity	1 - 999
Reduction / Enlargement	25 - 400 % (1% step)
Other features	Combine(2/4/8 in1) print, Margin Shift, Toner Save, Electronic Sorting, Cross Sorting, Duplex print, Booklet print, Secure print*, Watermark**

Scanner Features

Scan Method	Color scanner
Scan Resolutions	600dpi x 600dpi, 300dpi x 300dpi, 200dpi x 200dpi
Interface	USB2.0 (Standard) / 10BASE-T, 100BASE-TX (Optional)
Protocol	TWAIN, HTTP*, CIFS(SMB)*, FTP*, SMTP*
File Type	PDF, TIFF(for Mono data only), JPEG(for Color data only)

FAX Features

Transmission Standard(Speed)	SuperG3 (33.6kbps) / G3 (14.4kbps)
Speed Dial	500 locations (max. 2,000 locations*)
One Touch Speed Dial Key	80 Keys
Group Dial	32 groups (max. 200 groups*)
Maximum Broadcast	530 locations (max. 2,030 locations*)
Other features	Delayed transmission, Confirmation report, Polling, Security reception, ID check Tx, Closed Tx, PC-FAX*

*OfficeBridge option required **PCL option required

MFX-2835R / MFX-2835

Color Scanner
Copy, Print, Scan, Multifunctional document handling & A3 Fax

Digital Copy

Providing print speeds at 28 pages per minute, and quick warm up

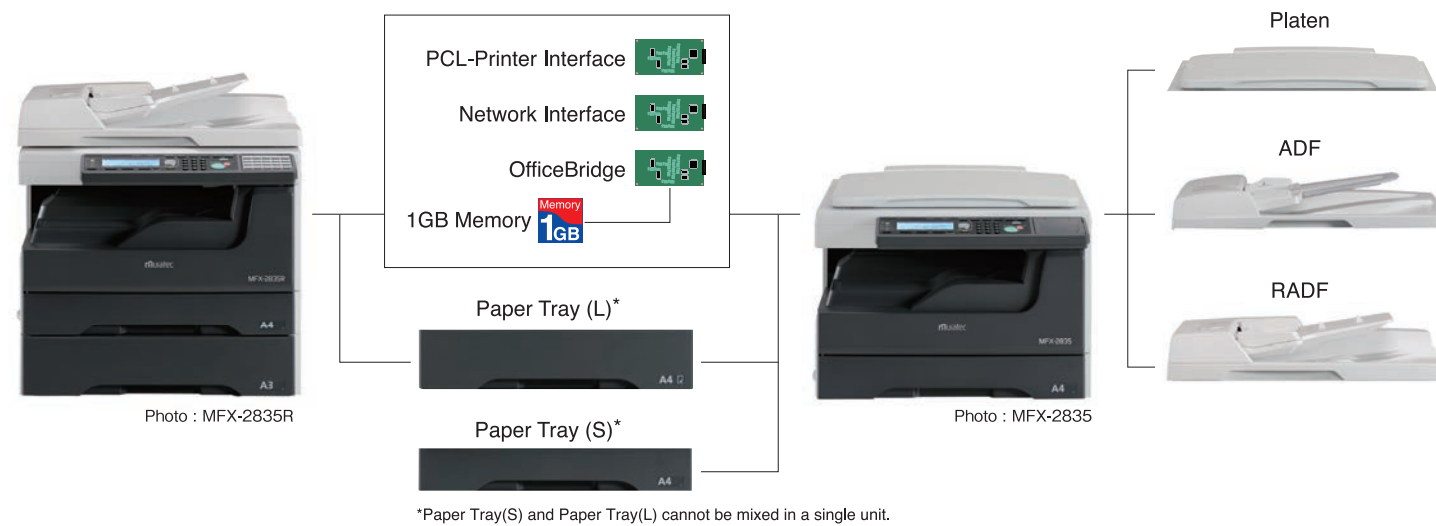
Super G3 FAX

Up to A3 size document can be sent over telephone line at high speed

Printer

Standard GDI printer with easy and direct connection to the PC through USB

Extend capabilities with optional accessories



- Please read the instruction manual carefully before using the machine.
- DO NOT use the machine in wet, humid, dusty, and/or smoky environment. Such environment may cause fire, malfunction and/or electric shock.



MURATA MACHINERY, LTD.
136, Takeda-Mukaishiro-cho, Fushimi-ku, KYOTO 612-8686 JAPAN
TEL:81-75-672-8243 FAX:81-75-672-8142
<http://www.muratec.co.jp>

MURATA MACHINERY, LTD., DUBAI BRANCH
P.O.Box 61105 Jebel Ali Dubai UAE
TEL:971-4-8817409 FAX:971-4-8817412
<http://www.muratec.net/ce/>

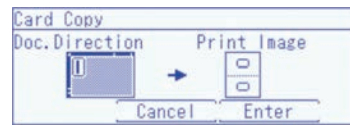
Digital Copying

28PPM High-Speed Copy

Providing print speeds of 28 pages per minute, and quick warm up time of 5.0 seconds.

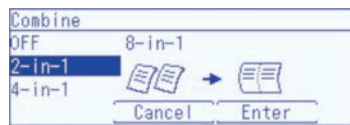
Card Copy

Small sized 2-sided original, such as drivers license and business cards, can be copied into one sheet of paper with intuitive operation.



Combine Copy

Save paper by combining multiple documents into a single sheet of paper.



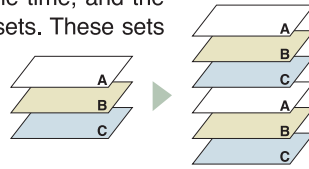
Repeat Copy

Copy the document onto 1 sheet of paper repeatedly.



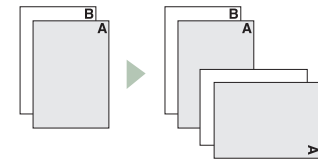
Sort Copy

Output multiple copies/prints at one time, and the printed pages can be sorted into sets. These sets may contain a copy of each page, or can be grouped with each set containing all copies of the same page.



Criss Cross Copy

When A4 paper is loaded with two different orientation, each set of collated copies are stacked 90° from the one below/above it automatically.



Duplex Copy

Duplex Print option can enable you to print 2-page original onto 1 sheet. By utilizing Combine Copy together, you can save paper farther more.

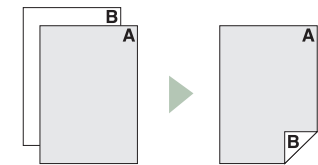


Photo : MFX-2835 with RADF

Ease of Use

Job Memory

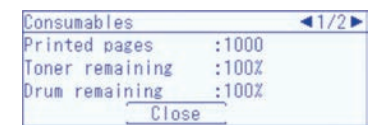
You are able to register the function that requires many steps of operation into the job memory, so that you can execute the program easily.

Energy Consumption

When you are not using the machine, it will turn the energy save mode for energy consumption.

Consumable Remaining Display

You can take a look to see the remaining of consumables.



FAX Functions

Super G3 Fax

Up to A3 size document can be sent at 33.6kbps to realize fast 2-second level transmission speed.

Security Functions

Various functions are equipped that helps prevent unexpected wrong operation such as "dial double-push function", "prohibit broadcast" and "confirm destinations".

Speed Dial/ Group Dial

Up to 500 speed dials (2000*), 32 group dials (200*), and 530 (2030*) broadcasting are available.

*Optional OfficeBridge required

FAX Send

When sending the fax, you can search the destination from address book indexed in alphabetical order.

Printer and Scanner

Standard GDI Printer

Standard GDI printer up to A3 size can be used when connected directly to a PC via USB.



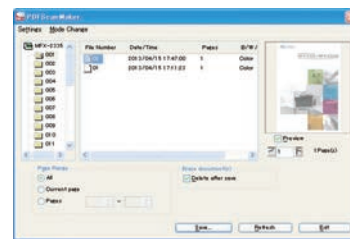
Local TWAIN Scan

Standard local TWAIN scan up to A3 size can be used when connected directly to a PC via USB.



PDF Scan Maker

Able to convert the document in the TWAIN box to a PDF format using the PDF Scan Maker.



Network Printer

By mounting the optional network interface card or the Office Bridge, MFX-2835/2835R can be used as a network printer.

*Optional NIC or OfficeBridge required

Useful Printer Function

Function such as "Combine print" (2/4/8 in 1), "Magnification" (25-400%), "Security print", "Toner save mode" can be used.

Eco Friendly and Cost Efficient

1.0W Power Consumption in Energy Save Mode

1.0W low power consumption is achieved in Energy Save Mode by minimizing the power supply to the machine control system.

Energy Star Partner

MFX-2835/2835R is an Energy Star qualified product. When you are not using the machine, it will automatically switch to the energy save mode and save energy consumption.

OfficeBridge Function (Option)

Scan to Box, E-mail, Folder and FTP

By using the OfficeBridge, you can scan and send the document to the OfficeBridge box, e-mail, folder and FTP server.

Internet Fax

Send and receive high-quality image faxes over the internet at high speeds.

User Policy Setting

You are able to set up the authority for what each user can use such as "address book", "communication history", "machine default" etc.

Security Print

The documents are stored within machine memory until the operator's ID and password are verified. You can keep confidential documents securely.

Direct PC Fax

Able to send the document data directly to an outside fax via the MFX-2835/2835R from your PC.



Photo : MFX-2835R with optional cassette